



I.L. MOTORSPORT

Installation Instruction

NA door panel quilted

NA1-301044

Contents/ Material:

- 1x Door panel **right** quilted with pre assembled clips
- 1x Door panel **left** quilted with pre assembled clips
- 2x Replacement clips for door panel
- 10x Screws black

Remove the door panels on your MX-5 as follows.

- Remove the diamond shaped cover on top of the door handle
- Unscrew the door handle (3 screws)
- Remove the door handle cups(1 screw)
- Remove the door speaker cover (4 clips)
- Now the door panel / card can be removed by lifting it at a small angle from the door.

To mount the quilted door pannel / card, the upper part of the original door card / panel must be re used on the new quilted panel. (pic 1)

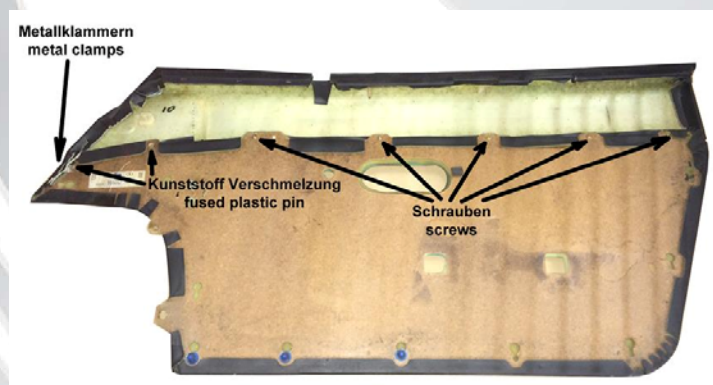


pic 1

To replace the door card / panel proceed as follows.

Please remove the metal brackets on the far left side of the door card / panel (pic 2) with a small screwdriver, and lift the synthetic leather overhang. Now you can remove the fused plastic pins on the left side of the panel with a utility knife. (Caution: risk of injury)

Now loosen the screws that connect the two panels. (Pic 2)



pic 2

The panel can now be seperated.

The next step is to clean the upper upholstered panel of any dirt.
Now position the new quilted panel on the upper plastic casing.

The loose synthetic leather (upper left corner) from the upper cover is easily fixated with glue. (superglue)
Use the supplied longer screws to connect the panels. The removed fused plastic pins are no longer used.



I.L. MOTORSPORT

Installation Instruction

NA Door panel diamond quilted

NA1-301044

If the parts are connected, the holes for the door handle need to be cut.
Depending on the door handle design that you want, you only need to cut certain pre punched holes.

- When you use a door handle loop, you will not need to punch any holes (NA0-301024)
- When you use door straps you will need to punch hole nr.1 in the below pic (NA0-301024)
- When you use the OEM door handle you will need to punch hole nr.1 & 2 in the below pic



To punch the holes, proceed as follows.

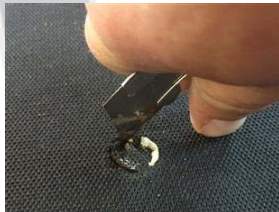
Use a cutter knife to punch the marked pre punch position(s) of your choice (marked with white foam point).

Please be careful to not damage the quilted upper part with the knife!

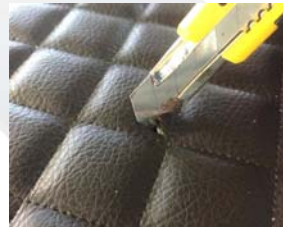
When properly cut you can use a screwdriver to remove the pre punched position from the panel. (pic 3)

Now carefully cut the same position on the front of the quilted panel (make a small cross) with a cutter knife. (pic 4)

Note: *If you cut part of a seam on the front of the quilted panel, please use a drop of glue on the seam to prevent the seam from tearing / loosen.*



pic 3



pic 4

